



Controlling exposures to prevent occupational lung disease in MANUFACTURING

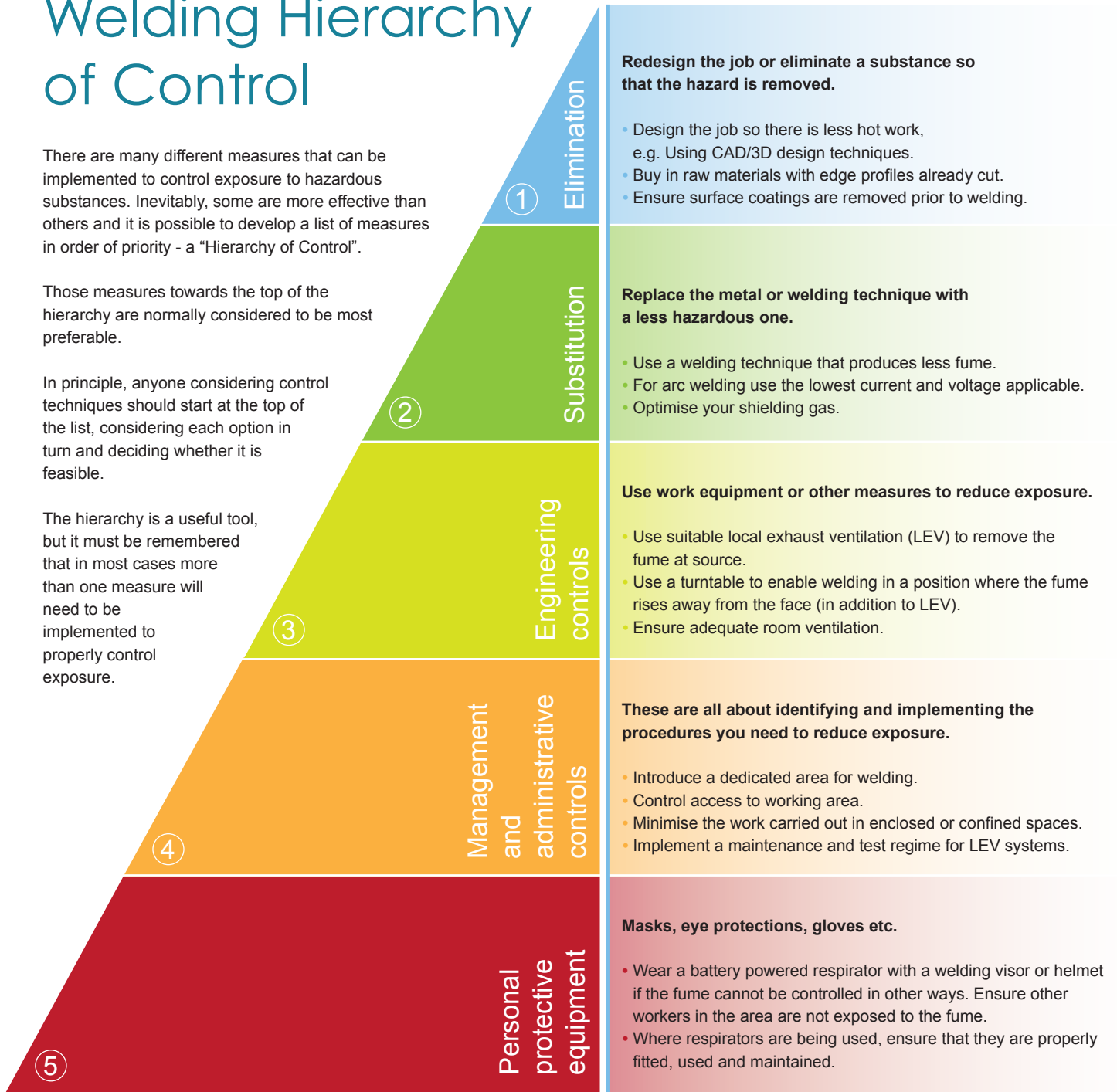
Welding Hierarchy of Control

There are many different measures that can be implemented to control exposure to hazardous substances. Inevitably, some are more effective than others and it is possible to develop a list of measures in order of priority - a "Hierarchy of Control".

Those measures towards the top of the hierarchy are normally considered to be most preferable.

In principle, anyone considering control techniques should start at the top of the list, considering each option in turn and deciding whether it is feasible.

The hierarchy is a useful tool, but it must be remembered that in most cases more than one measure will need to be implemented to properly control exposure.



Decreasing effectiveness